

Industrial For Lease



Available SF: 2,227

Total Building SF: 9,360



Address: 1612 Fiske Pl, Oxnard, CA 93033
Cross Streets: Fiske Pl/S. Rose Ave
Park Name: Channel Island Business Center

**Attractive Industrial Unit in Small Multi-Tenant Bldg.
Front Loading Glass Roll Up Door
516 Sq. Ft. Office
16' Clear Span Warehouse
Channel Islands Business Center**

Lease Rate/SF: \$.79
Lease Type: Gross
Available SF: 2,227
Const Status/Yr Blt: Existing/2007
Region: Ventura
Zoning: ML
Ground Level Drs: 1 / 12X14
Sprinklered: Yes
Finished Ofc Mezz: No
Include In Avail: No
Rail Service: No

Lease Rate/Mo: \$1,759
Terms: 3-5 Years Annual COLA
Roof Type: Laminated/GLU Wood Beam
Construction Type: Tilt-up
Specific Use: Light Industrial
Lot Size: POL
Dock High: 0
Yard: No
Unfinished Mezz: No
Include In Avail: No
Heat/Cool: None

Taxes: 2010-2011
Possession: Now
Minimum SF: 2,227
Parking: Spaces: 4
Thomas Guide: 552-J1
APN #:
Office SF / #: 516 / 1
Office Air: Yes **Office Heat:** Yes
Clear Height: 16
A: 200 **V:** 277-480 **Ø:** 3 **W:** 4
Restrooms: 1

Listing Company: Industrial Park Associates - Oxnard (805) 983-2200

To Show: Call Agent

Agents: Michael Wax Vice President (805) 983-2200 x113, Douglas Wax President (805) 983-2200x116

Property/Listing/Ste #: 716795/554392/1099029

Listing Date: 03/30/2011

FTCF: AP250Y150S000/AOAA

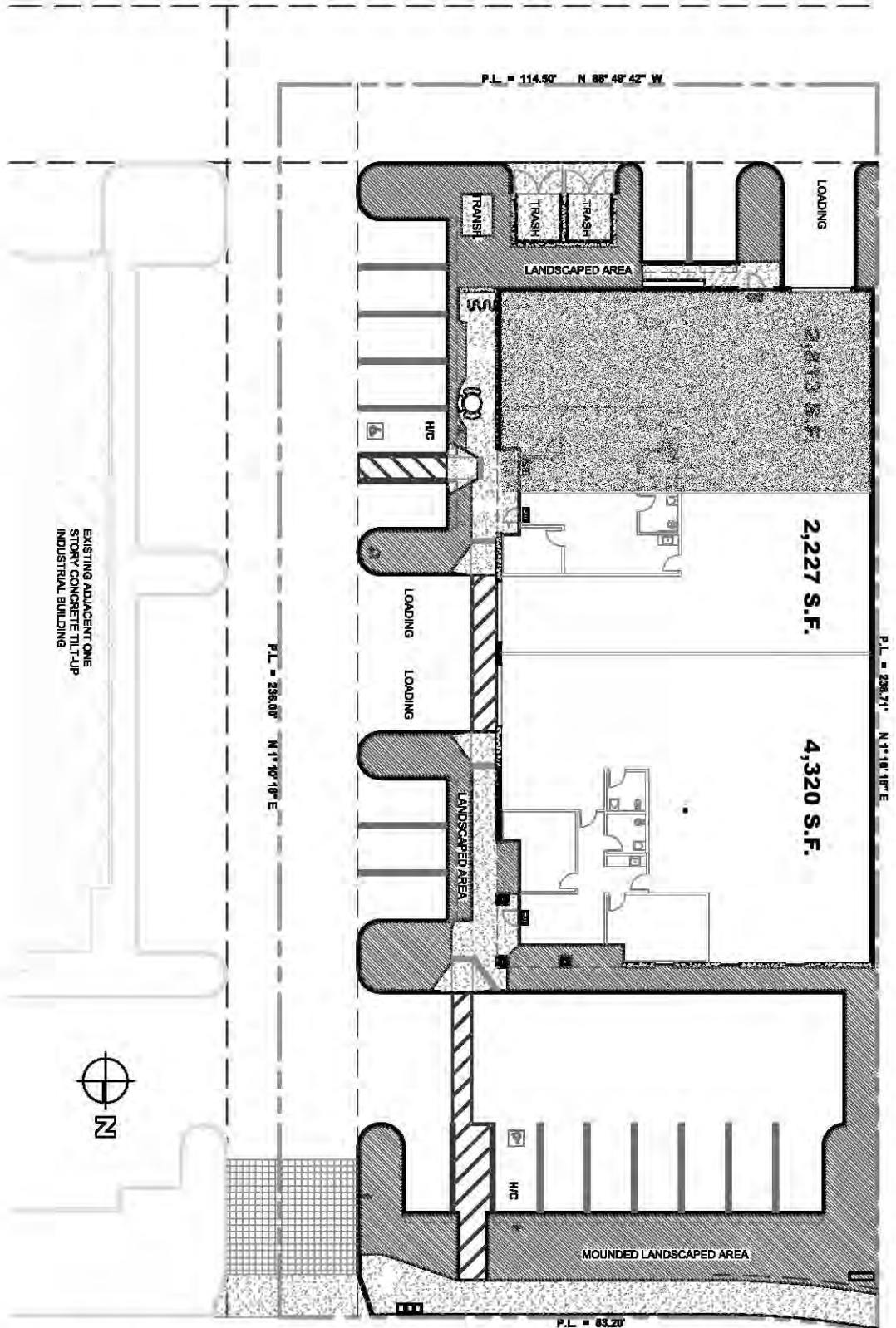
Notes: Occupied. \$95 monthly CAM Fee for landscape maintenance, water, trash & fire sprinkler monitoring. No woodworking or machine shop uses. Sp. Feat: Part of Industrial Park. Taxes are for entire property \$13,099.00

This information has been obtained from sources believed reliable. While we do not doubt its accuracy, we have not verified it and make no guarantee, warranty or representation about it. It is your responsibility to independently confirm its accuracy.



- FOR LEASE -

1610-1612 Fiske Place, Oxnard



For More Info Please Call:
MIKE WAX / DOUG WAX
(805) 983-2200